

DESERT MISSION



HISTORY

A LEGACY OF CARING

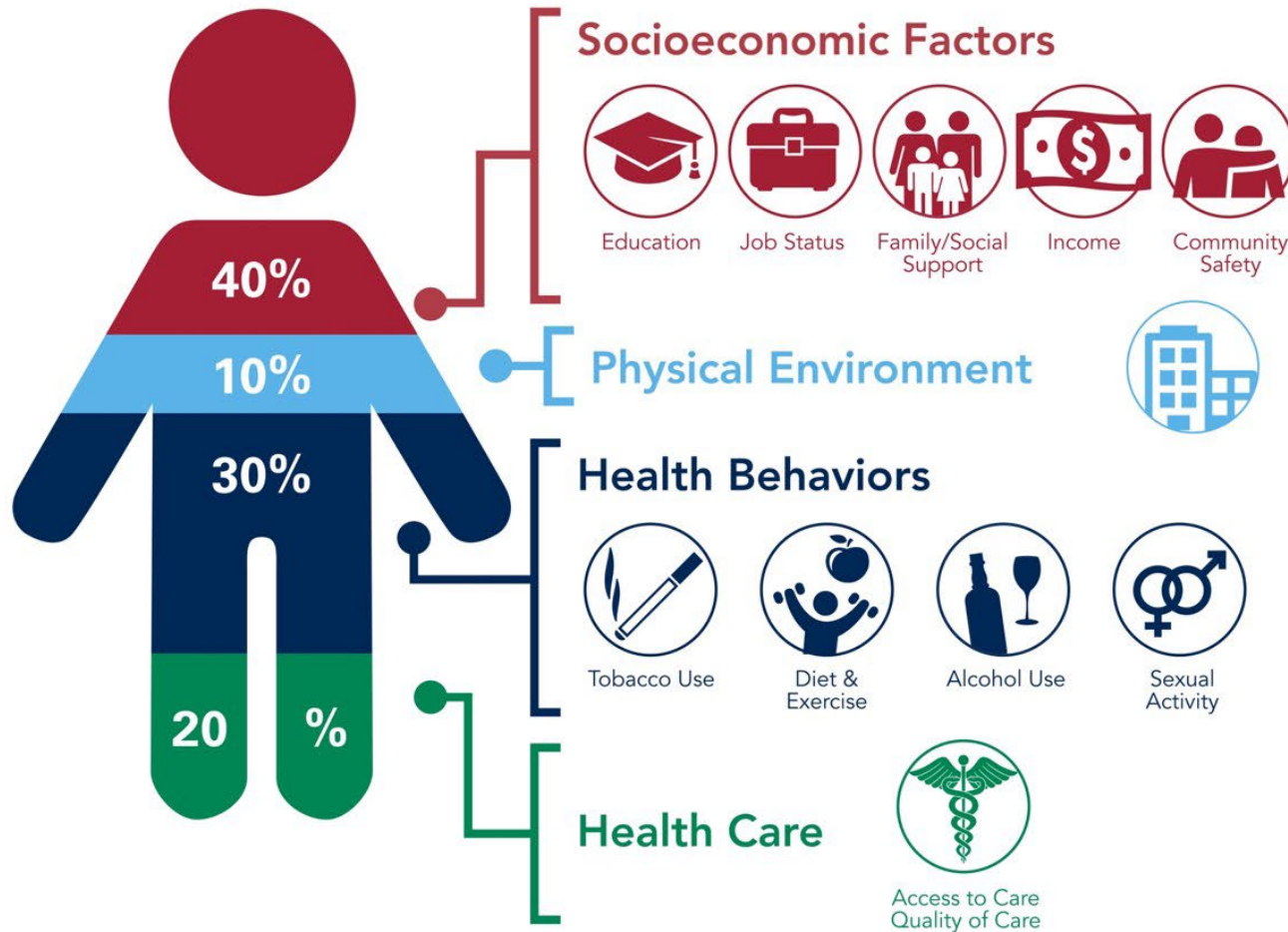
Since the 1900s, Desert Mission has demonstrated genuine care for the **health** and **social needs** of our community:

- Lincoln Learning Center
- Adult Day Health Care
- Food Bank
- Living Well (Aug. 2022)



IMPACT OF SOCIAL DETERMINANTS OF HEALTH

Social determinants of health have tremendous affect on an individual's health regardless of age, race, or ethnicity.



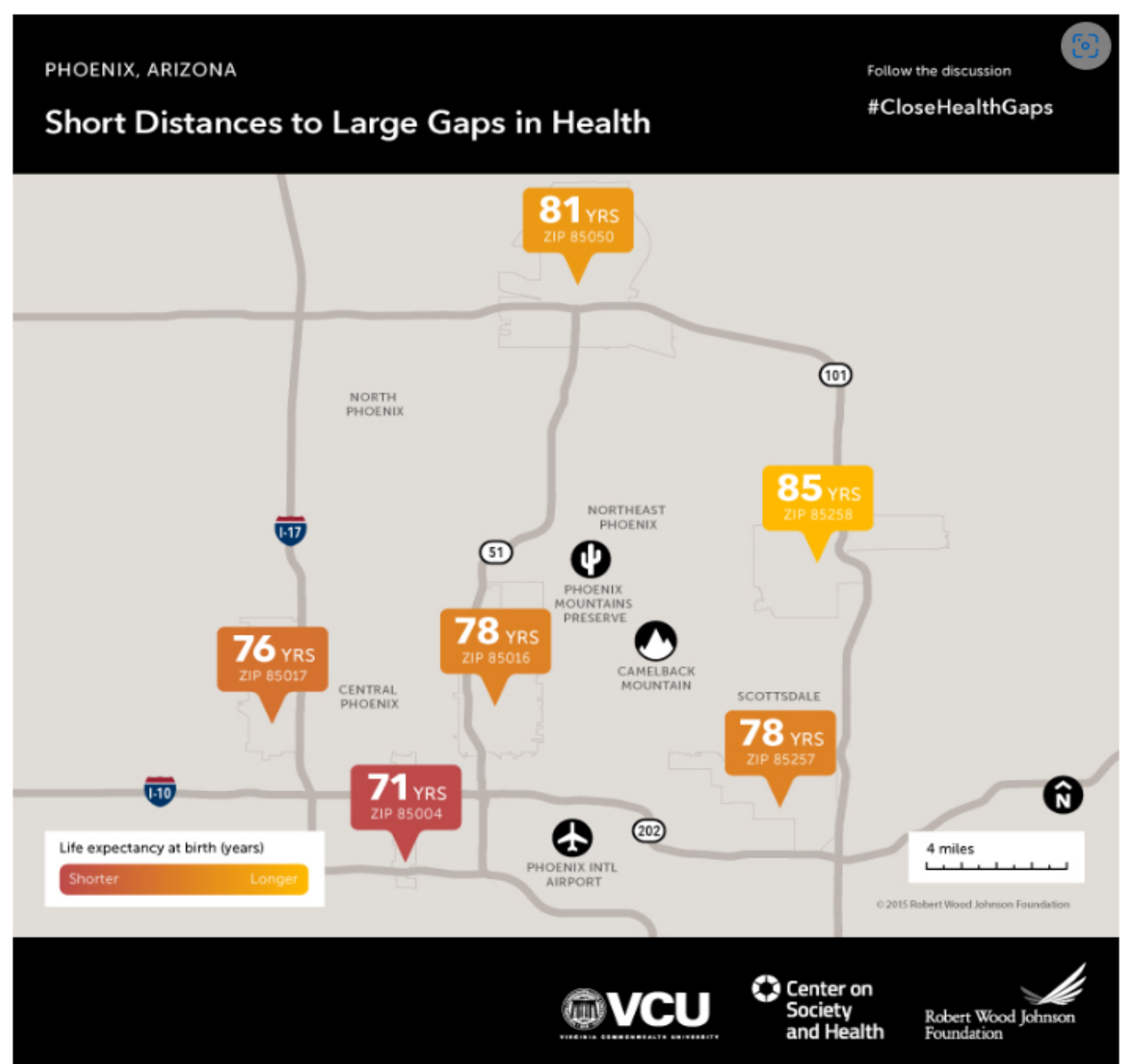
SDoH Impact

- ➔ **20%** of a person's health and well-being is related to **access to care and quality of services**
- ➔ The **physical environment, social determinants and behavioral factors** drive **80%** of health outcomes

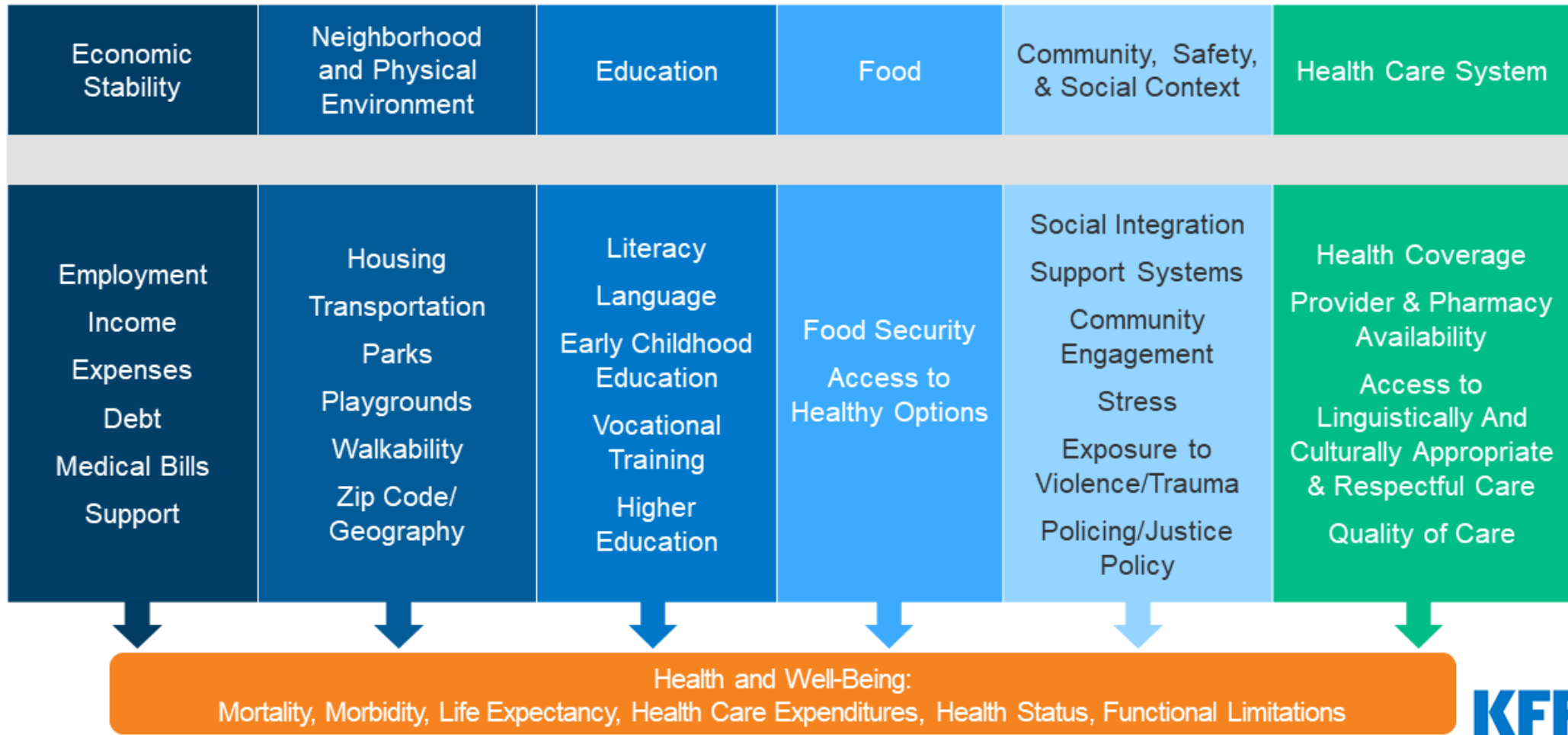
“Your mortality and your health outcomes are determined more by your ZIP CODE than by your genetic code or the quality of your health care”

-Robert Wood Johnson Foundation

Hospital-based Strategies for Creating a Culture of Health



Social Determinants of Health



LINCOLN LEARNING CENTER

Lincoln Learning Center is a recognized leader in our industry with a waitlist of 130+ students.

Supports children's early learning, life skill development and school readiness.

Provides parents access to resources and the knowledge to support their child's development and learning.

One of 42 accredited by the NAEYC, and First Things First 5-star quality rating.



Kindergarten Readiness:
98% at LLC vs.
50% Arizona



LINCOLN LEARNING CENTER EDUCATION

- Scholarship assistance through the Foundation & Department of Economic Security (quality education for all)
- Infant and toddler programs
- Preschool and pre-kindergarten classes
- Developmental screenings
- Garden, field trips & opportunities for active play & hands-on exploration (learn by doing)
- Intergenerational activities with seniors

ADULT DAY HEALTH CARE

What is ADHC?

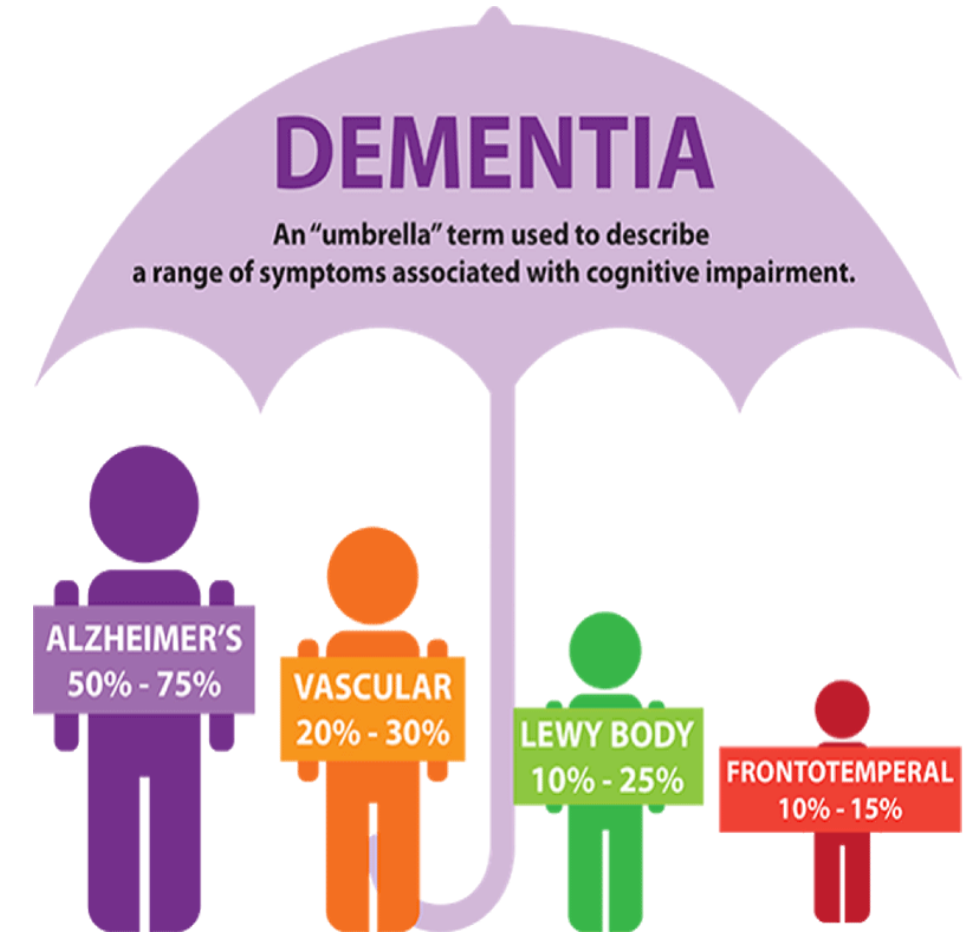
- Transition services for dependent adults. *The only ADHC in Phoenix!*
- Social, cognitive, and enrichment activities
- Certified caregivers and dementia practitioners on staff
- Nutritious meals prepared (breakfast, lunch, and snack)

Who do we serve?

- Dependent adults (members) who cannot be home alone safely
- 94-96% of members are experiencing dementia
- Caregiver respite and support group
- 25 % Veterans
- Oldest Member 102
- 84% Financial Assistance/Scholarships

Why?

- In 2023 it was estimated over 150,000 would be diagnosed with dementia
- By 2025, it is anticipated 200,000 Arizonians will be diagnosed
- Comorbidities and social isolation
- Social Determinants of Health; Longevity





ADULT DAY HEALTH CARE

Nursing & Personal Care

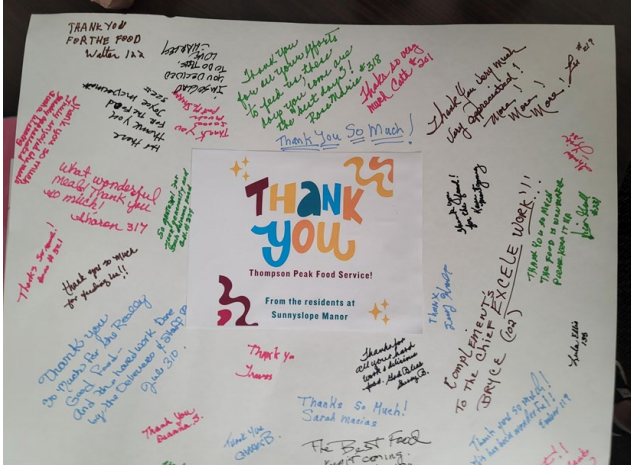
- Nursing care provided by a registered nurse
 - Medications, wound care
 - Health education
- ADL's by certified caregivers
 - Blood Pressure checks
 - Vital Signs



DESERT MISSION FOOD BANK

- Who do we serve?
- How do we serve them?
 - Front & back door programs & events
 - Emergency (^21%) & Senior Food Programs (^48%)
 - Baby Bag Program
 - Food as Medicine Programs
 - Employee & School Pantries
 - Farm Stand
 - Snack Packs (~1,000/month)
 - Nutrition Policy & Education
 - Community Gardens
- A rising need...
 - 2024 Jan “Slow Month”: 236,544 lbs
 - 2023 Nov Highest: 235,144 lbs
 - 200+ households/day
 - Trucks, supplies + costs ^





INNOVATION & OPPORTUNITY

- Innovation has come about simply due to funding opportunities! In 2023...
 - Senior Meals at Sunnyslope Manor (5,040 meals to 45 seniors for 16 weeks)
 - JCL Employee Pantry (20 employees/week)
 - Ocotillo School Pantry (150 households/month)
 - Desert View Garden (K-5 School, learn by doing)
- Other than meeting people where they are, how else can we address SDOH?

A Conceptual Framework: Cycle of Food Insecurity & Chronic Disease



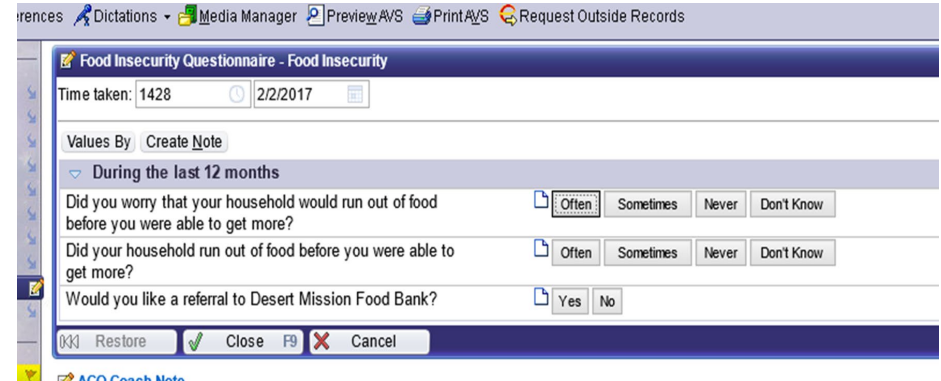
Adapted: Seligman HK, Schillinger D. N Engl J Med. 2010;363:6-9.

How can we break the cycle?

LIVING WELL

Empowerment and Resource Navigation:

- Financial Coaching: Community and Employee
- Public benefits (SNAP food stamps, AHCCCS medical insurance, TANF cash assistance)
- Emergency assistance
- Low-cost medical, dental, and mental health options
- Housing counseling (home rental, fair housing, landlord-tenant issues, etc.)
- Trauma-Informed Approach
- Closed Loop Referral System
- Community Partnerships



The screenshot shows a web-based questionnaire titled "Food Insecurity Questionnaire - Food Insecurity". The interface includes a top navigation bar with links for "Dictations", "Media Manager", "Preview A/S", "Print A/S", and "Request Outside Records". Below the title bar, the "Time taken" is displayed as 1428 seconds on 2/2/2017. A "Values By" field and a "Create Note" button are visible. The main content area is titled "During the last 12 months" and contains three questions with corresponding response buttons:

- Question 1: "Did you worry that your household would run out of food before you were able to get more?" with buttons for "Often", "Sometimes", "Never", and "Don't Know".
- Question 2: "Did your household run out of food before you were able to get more?" with buttons for "Often", "Sometimes", "Never", and "Don't Know".
- Question 3: "Would you like a referral to Desert Mission Food Bank?" with buttons for "Yes" and "No".

At the bottom of the form, there are buttons for "Restore", "Close", and "Cancel".



The logo for HonorHealth, featuring the word "HONORHEALTH" in white, uppercase, sans-serif font. The text is split across two overlapping purple rectangular blocks. The first block is on the left and is shorter than the second block on the right. A thin black horizontal line runs beneath the purple blocks, with a small step-down on the left side.

HONORHEALTH[®]

Desert Mission

ANNUAL PROGRAMS & POPULAR COMMUNITY EVENTS



HEART OF SUNNYSLOPE

- Takes place in February
- In partnership with Maricopa County Department of Public Health
- Fun, family-friendly event that offers free or low-cost resources to enhance health & well-being.
- Free health screenings for adults
- Complimentary produce bags
- Music, entertainment, kids' activities

BACK TO SCHOOL PROGRAM

Annual Back to School Drive

- Takes place each summer around June
- Will be looking for HH champions at each hospital location
- HonorHealth hospitals, corporations, local businesses and community members love to participate
- In 2023, Desert Mission distributed a total of **1,426 backpacks!**
- Desert Mission provides backpacks not only to children at the **food bank** and **Lincoln Learning Center** but also to **community partners** like the Washington Elementary School District, NOAH, WRIC, etc.





TURKEY DRIVE & DISTRIBUTION



- Distribution day is the Saturday before Thanksgiving
- Thanksgiving groceries distributed to our community members in need
- Households served: 1,400+ annually
- Huge involvement (production, volunteering, donations) from HonorHealth employees!



Holiday ADOPT A FAMILY

- Takes place in December
- In 2023, 191 total families were adopted by 117 generous donors!
- 53% of our family adopters were HonorHealth employees and department teams
- Many HonorHealth employees and departments participated as donors and volunteers for fun team-building over the holidays



PREPARING FOR THE NEEDS OF TOMORROW

Being resilient also means preparing to meet any new and emerging challenges that may come our way in the future. At Desert Mission, we're focused on addressing the social determinants of health within our community, including:



-  **Early care and childhood education**
-  **Food pantries in schools, clinics and medical facilities**
-  **Nutrition information and cooking classes**

-  **Resources to help with rising rents and housing costs**
-  **Care for aging adults**
-  **Food deliveries to seniors**
-  **Help with job searches and interviews**

WAYS TO GET INVOLVED

- ♥ Spread the word!
- ♥ Donations help to support our programs
- ♥ Volunteer or arrange a team-building activity by volunteering as a group
- ♥ Hold a food/supply drive in your department
- ♥ Ambassador & special event opportunities

Interested in Learning More?

Visit www.DesertMission.com



QUESTIONS?